



®  
**LEMINEX**

E X T E R I O R  
**CLADDING**  
P R E M I U M Q U A L I T Y

COLLECTION : 2018 - 19

# LEMINEX<sup>®</sup>

## EXTERIOR HPL CLADDING

### EXTERIOR CLADDING

High Pressure Laminate Exterior Cladding has become an increasingly popular feature to enhance the appearance of a new or renovated facade. These panels are produced in laminate presses under high pressure and at high temperatures, maintaining the global standards. It has a superior weather protective coating that comes with double hardened resins, providing longevity to the building facades. According to the penchant of today's world, LemineX has formulated its catalogue introducing spectacular designs for covering the facades.

Thickness Offered : 6 mm and above

Size : 1220 mm x 2440 mm / 4 x 8 Feet  
1220 mm x 3050 mm / 4 x 10 Feet



Remove Watermark Now



Dark Flowery Teak  
714SF





Remove Watermark Now

iskysoft

Dark Charm  
763 SF





Remove Watermark Now

iskysoft



SmokedPlank  
780SF



Remove Watermark Now



TeakSAP  
788SF



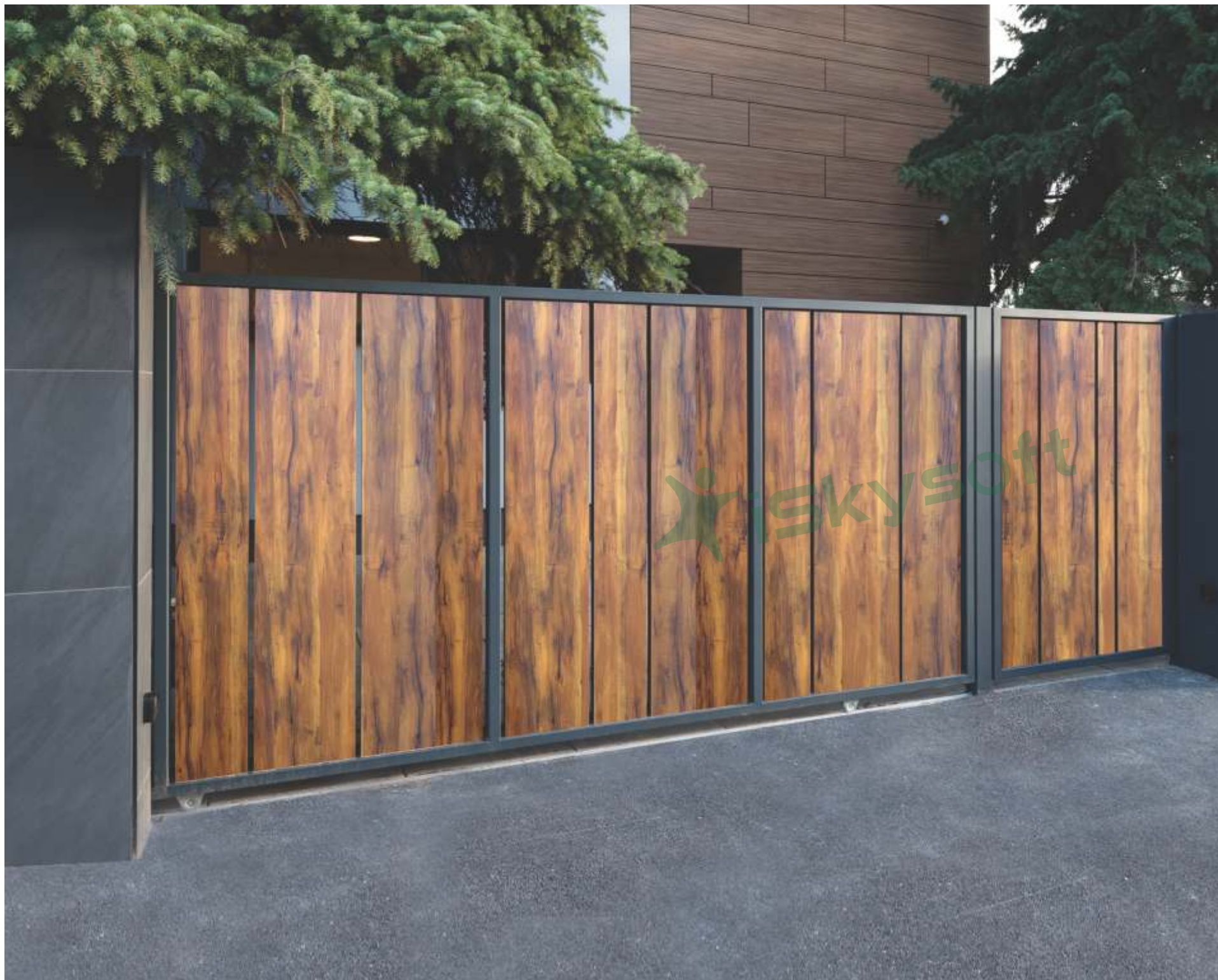


Remove Watermark Now



SmokedPlank  
789SF





Remove Watermark Now



Classic Burnt Wood  
990SF







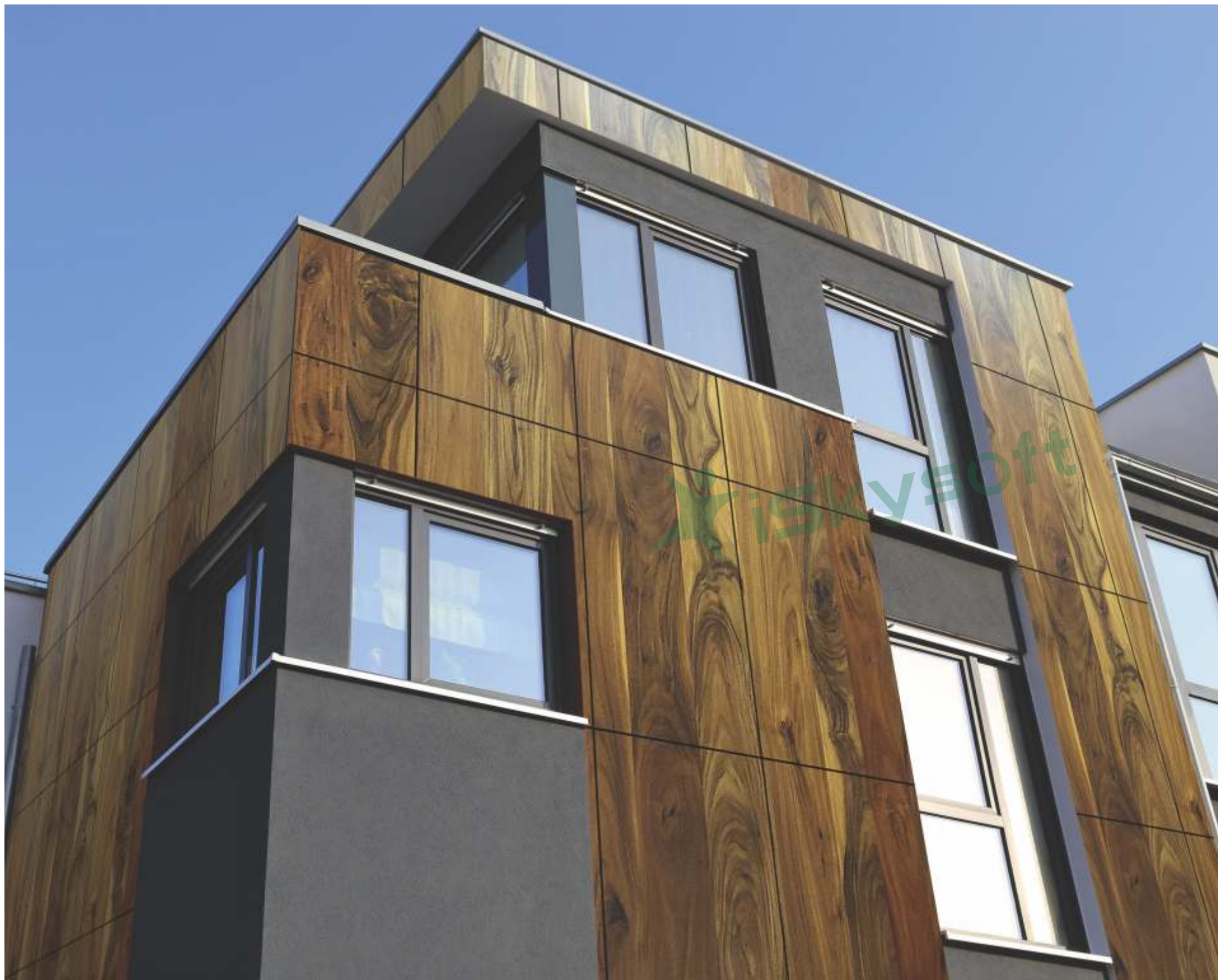


Remove Watermark Now



OriginalPine  
2204SF





Remove Watermark Now

Knotty Walnut Plank  
992 SF





Classic Walnut  
993 SF









Remove Watermark Now



Brown Rust  
12502 SF





Remove Watermark Now

Maroon Rust  
12507SF





Remove Watermark Now

Soft

Knotty Pine  
2203 SF





Remove Watermark Now



American Elm  
454SF





Remove Watermark Now

iSkysoft

BruntWood  
5110SF





Remove Watermark Now



Canyon Monument Oak  
484 SF





Remove Watermark Now



CanyonDarkApple  
491 SF





Remove Watermark Now



ChocoWood  
847SF





Remove Watermark Now



Classic Sap  
2209 SF





Remove Watermark Now



Rustic Delight  
500 SF





Remove Watermark Now

iskysott

Smoked Canyon Pekan  
471 SF





Remove Watermark Now

Walnut Plank  
712 SF





Remove Watermark Now

BlueWood  
783 SF





Remove Watermark Now

ISKYsoft

Brown Rust  
12504SF





Remove Watermark Now

Arizona Walnut  
7720SF





Remove Watermark Now



Grey Monument Oak  
494SF





Remove Watermark Now

iskysoft

Highway Gloss  
861 SF





Princess Walnut  
583 SF





Remove Watermark Now

Oak Plank Brown  
607 SF





iskysoft



Remove Watermark Now

LightCanyonPekan  
470SF





Remove Watermark Now



BurntFloweryTeak  
713SF





Remove Watermark Now



Yellow Fur  
12503 SF





Remove Watermark Now



Wisconsin Walnut  
453 SF





Remove Watermark Now



Woody Streaks  
463 SF









Remove Watermark Now



SmokedHazelNut  
613SF

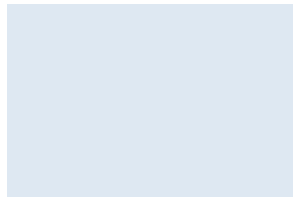


# TECHNICAL SPECIFICATIONS

SL. No.	PROPERTIES	TEST METHOD	ATTRIBUTES OF PERFORMANCE	UNIT OF MEASUREMENT	RESULTS (AS PER EN 438-7)
<b>1</b>	<b>DIMENSIONAL PROPERTIES</b>				
1.1	Thickness	EN 438-2.5	Thickness tolerance	6 mm	$5 \leq T < 8 : -0,4$
1.2	Size	EN 438-2.6	Length and width	8	+10 / - 0
1.3	Straightness of edges	EN 438-2.7	Straightness of edges	mm/m	$\leq 1,5$
1.4	Squareness	EN 438-2.8	Squareness	mm/m	$\leq 1,5$
1.5	Flatness	EN 438-2.9	Flatness (measured on full size sheet).	mm/m	$2,0 \leq T < 6,0 : 8$
<b>2</b>	<b>PHYSICAL PROPERTIES</b>				
2.1	Flexural Modulus	EN ISO 1 78	Stress	Mpa	$\geq 9000$
2.2	Flexural Strength	EN ISO 1 78	Stress	Mpa	$\geq 80$
2.3	Tensile Strength	EN ISO 527-2	Stress	Mpa	$\geq 60$
2.4	Density	EN ISO 1183	Density	gm/cm <sup>3</sup>	$\geq 1,35$
2.5	Resistance to impact with large diameter ball	EN 438-2.21	Indent. dia 10mm $2 \leq T < 6$ mm Drop Height Indent. dia 10mm $T \geq 6$ mm - Drop Height	min. min.	$\geq 1400$ $\geq 1800$
2.6	Resistance to Wet Conditions	EN 438-2.15	Mass increase - $2 \leq T < 5$ mm Mass increase - $2 \geq T < 5$ mm Appearance	max. % max. % Rating	EGS/EDS- $\leq 7$ , EGS/EDS- $\leq 10$ EGS/EDS- $\leq 5$ , EGS/EDS- $\leq 8$ $\geq 4$
2.7	Dimensional stability at elevated temperatures	EN 438-2.17	Cumulative dimensional change- $2 \leq T < 5$ mm Cumulative dimensional change- $2 \geq T < 5$ mm	Longitudinal % Transversal % Longitudinal % Transversal %	$\leq 0,40$ $\leq 0,80$ $\leq 0,30$ $\leq 0,60$
<b>3</b>					
3.1	Resistance to Climatic Shock	EN 438-2.19	Thermal Shock Resistance - Appearance	Rating	$\geq 4$
3.2	Resistance to Artificial Weathering	EN 438-2.29	Contrast	Grey scale rating	$\geq 3$



# Classic Solids



101 SF >> White



102 SF >> Frosty White



147 SF >> Bright Yellow



145 SF >> Orange



127 SF >> Red



211 >> Deep Red



123 >> Baby Pink



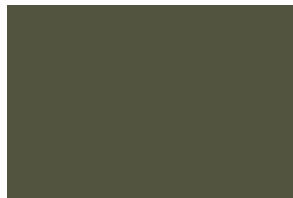
151 SF >> Green



201 >> Parrot Green



202 >> Olive



204 >> Military Green



205 >> Grey Blue



206 >> Dark Blue



207 >> Sea Blue



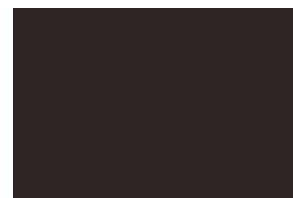
136 SF >> Dark Blue



208 >> Taupe



212 >> Mochaccino



184 SF >> Coffee



200 SF >> Black



# BEAUTIFYING EXTERIOR



Borer Free



Termite Free



Waterproof



Eco Friendly



Fire Proof



Resistance to Natural Elements



No Special Tools



Cost Effective



Satisfaction Guaranteed



**LEMINEX**<sup>®</sup>  
**CLADAGE**  
THE WARMTH OF WOOD

LEMINEX

PLOT NO- 8,604,S.G SHOPPING MALL, ROHINI SEC-9,

D.C CHOWK, DELHI -11100085 India T : +9101145595001 || +91

9811060584 E :ufcinternational001@gmail.com | wwwleminex.eu

